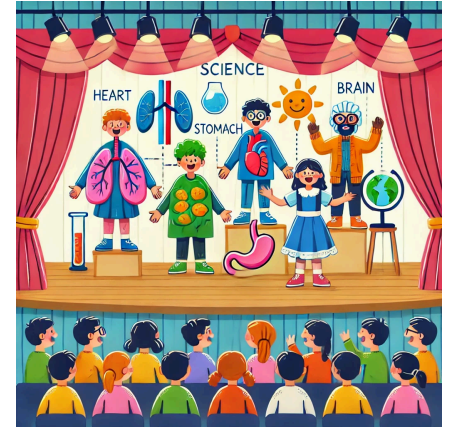


Body Systems Skit



Locations labelled in classroom:

- Heart
- Lungs
- Small Intestine
- Body Cells are around the room
- Paths taped on floor represent blood vessels

All students have name tags. They are all either:

- Blood cell
- Body Cell
- Lung Cell
- Small Intestine

Materials:

- One type of wrapped candy (gum, jolly ranchers, sucker, rockets, mini chocolate, etc): Oxygen / Carbon Dioxide
- Second type of candy not wrapped (nerds or something): Food nutrients

'Skit'

1. Have everyone say what they are and where they should be. Try and guess what they will be doing in the skit
2. Body Cells get scattered around perimeter of room
3. Lung cells go to lungs and get wrapped candy
4. Small intestine cells go to small intestine and get not wrapped candy
5. Blood cells get a plastic plate. Their job is to:
 - pick up 'oxygen candy' from lungs, and deliver to body cell.
 - Body cell eats candy and gives wrapper (carbon dioxide). Wrapper is brought back to lungs to EXHALE
 - Pick up 'food candy' and bring to body cell

NOTE: Only body cells get to eat candy, so you might want to rotate taking turns being body cells!